

МАГНИТНЫЕ ШАРИКИ С ПРОТЕИНОМ



Алматы (7273)495-231
Ангарск (3955)60-70-56
Архангельск (8182)63-90-72
Астрахань (8512)99-46-04
Барнаул (3852)73-04-60
Белгород (4722)40-23-64
Благовещенск (4162)22-76-07
Брянск (4832)59-03-52
Владивосток (423)249-28-31
Владикавказ (8672)28-90-48
Владимир (4922)49-43-18
Волгоград (844)278-03-48
Вологда (8172)26-41-59
Воронеж (473)204-51-73
Екатеринбург (343)384-55-89

Иваново (4932)77-34-06
Ижевск (3412)26-03-58
Иркутск (395)279-98-46
Казань (843)206-01-48
Калининград (4012)72-03-81
Калуга (4842)92-23-67
Кемерово (3842)65-04-62
Киров (8332)68-02-04
Коломна (4966)23-41-49
Кострома (4942)77-07-48
Краснодар (861)203-40-90
Красноярск (391)204-63-61
Курск (4712)77-13-04
Курган (3522)50-90-47
Липецк (4742)52-20-81

Магнитогорск (3519)55-03-13
Москва (495)268-04-70
Мурманск (8152)59-64-93
Набережные Челны (8552)20-53-41
Нижний Новгород (831)429-08-12
Новокузнецк (3843)20-46-81
Ноябрьск (3496)41-32-12
Новосибирск (383)227-86-73
Омск (3812)21-46-40
Орел (4862)44-53-42
Оренбург (3532)37-68-04
Пенза (8412)22-31-16
Петрозаводск (8142)55-98-37
Псков (8112)59-10-37

Пермь (342)205-81-47
Ростов-на-Дону (863)308-18-15
Рязань (4912)46-61-64
Самара (846)206-03-16
Саранск (8342)22-96-24
Санкт-Петербург (812)309-46-40
Саратов (845)249-38-78
Севастополь (8692)22-31-93
Симферополь (3652)67-13-56
Смоленск (4812)29-41-54
Сочи (862)225-72-31
Ставрополь (8652)20-65-13
Сургут (3462)77-98-35
Сыктывкар (8212)25-95-17
Тамбов (4752)50-40-97

Тверь (4822)63-31-35
Тольятти (8482)63-91-07
Томск (3822)98-41-53
Тула (4872)33-79-87
Тюмень (3452)66-21-18
Ульяновск (8422)24-23-59
Улан-Удэ (3012)59-97-51
Уфа (347)229-48-12
Хабаровск (4212)92-98-04
Чебоксары (8352)28-53-07
Челябинск (351)202-03-61
Череповец (8202)49-02-64
Чита (3022)38-34-83
Якутск (4112)23-90-97
Ярославль (4852)69-52-93

Россия +7(495)268-04-70

Казахстан +7(7172)727-132

Киргизия +996(312)96-26-47

<https://millipore.nt-rt.ru> || <mailto:mer@nt-rt.ru>

PureProteome™ Protein A and Protein G Magnetic Beads

Eliminate Variability. Maximize Recovery.



PureProteome Protein A and Protein G magnetic beads are a powerful system to isolate antibodies faster, easier, and with more reproducibility than ever before. PureProteome Protein A and Protein G magnetic beads purify your sample with the highest binding capacity of any magnetic beads available. You can achieve reproducible results in both immunoprecipitation and serum depletion assays.

Advantages

- High capacity: More than 6x the binding capacity of competitive magnetic beads.
 - Bind 1.5-3.5 µg of rabbit IgG per µL of suspension
- Consistent results: Total removal of buffers with no sample loss
- Fast processing time: Bead immobilization occurs in seconds
- Ideal for immunoprecipitation and serum depletion assays
- Economical: Up to half the price of competitive magnetic beads

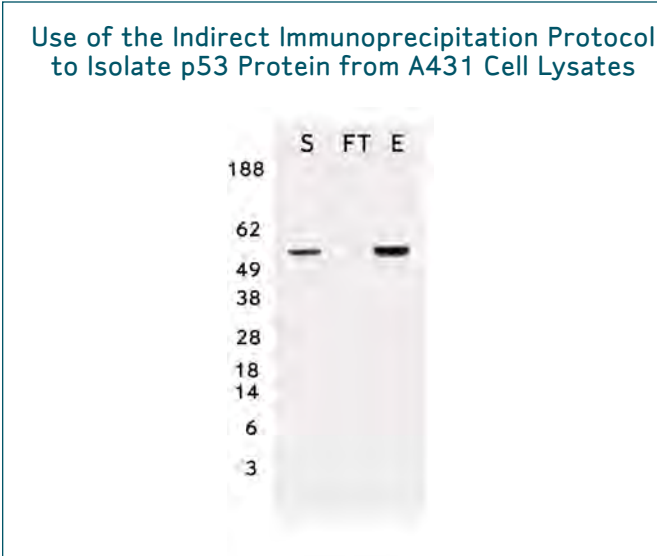
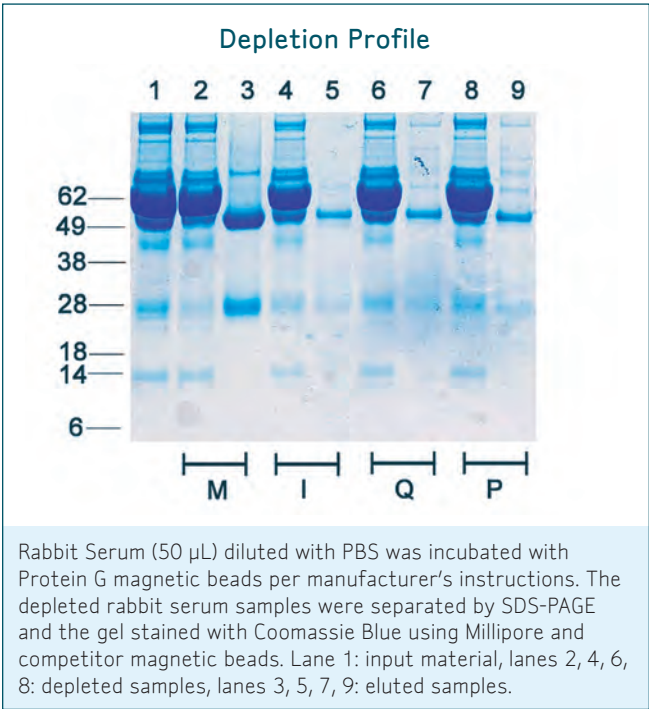
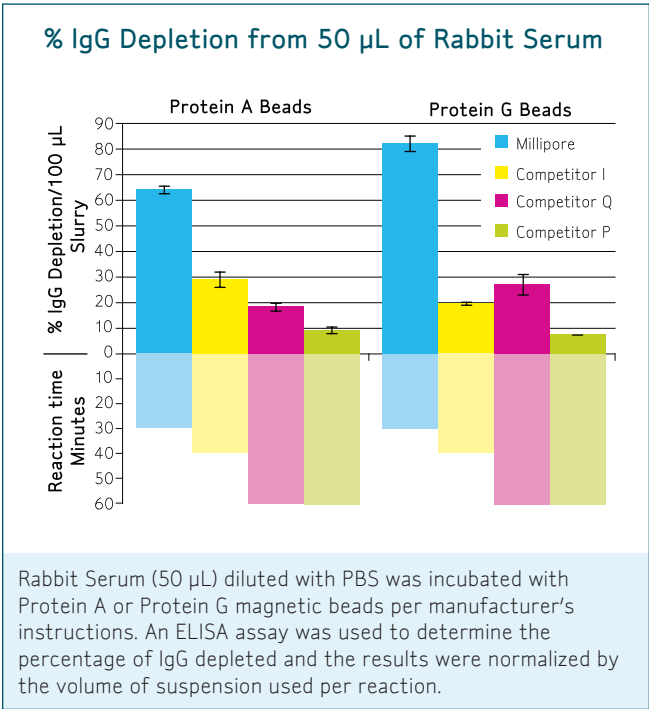
Superior magnetic bead performance from the experts in porous media

HIGH BINDING CAPACITY WITH RAPID SAMPLE PROCESSING

Trust Millipore to develop a superior magnetic bead system optimized to advance your research. Millipore’s process for paramagnetizing porous silica particles enables us to provide magnetic beads with the highest binding capacity when compared to other magnetic purification systems.

With a binding capacity 6x greater than competitive beads, PureProteome Protein A and Protein G magnetic beads provide the greatest percentage of immunoglobulin (IgG) depletion from serum samples with low non-specific binding.

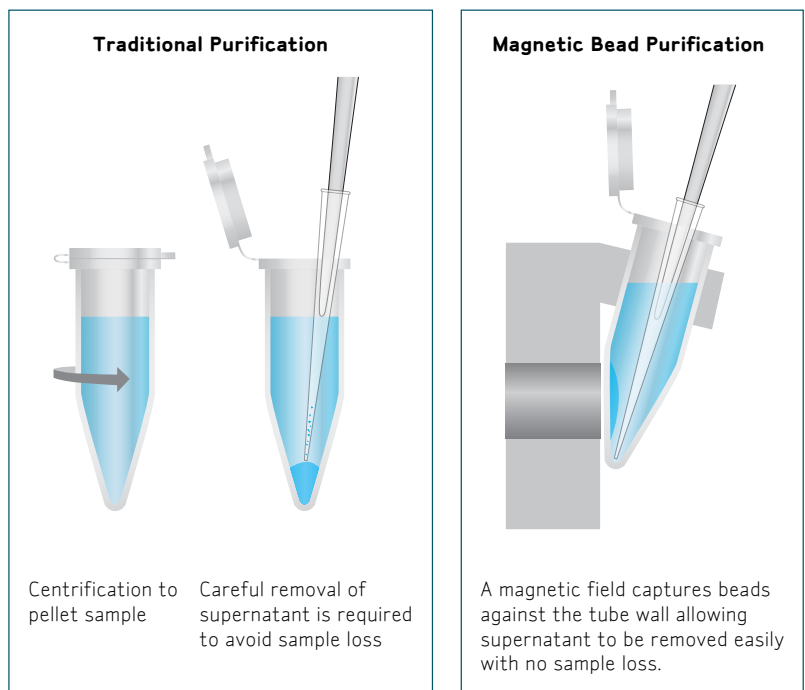
Get up to 8X greater depletion in half the time.



COMPLETE RECOVERY WITH REPRODUCIBLE RESULTS

Millipore's new PureProteome magnetic beads ensure the rapid and reproducible isolation of proteins. Unlike conventional methods that require centrifugation to pellet followed by careful aspiration to avoid sample loss, PureProteome magnetic beads are isolated using a magnetic rack. This allows for the total removal of buffers for complete recovery of beads with no sample dilution.

Eliminate variability while maximizing recovery.



FAST AND EASY

While traditional methods require minutes of harsh centrifugation to isolate your sample, the PureProteome magnetic bead system isolates proteins in seconds using a magnetic rack right on your bench. A magnetic field gently immobilizes the highly-visible beads on the side of the tube. This allows quick and easy aspiration and eliminates the need for a centrifugation step. With the increased reaction kinetics of the Pure Proteome magnetic beads, incubations can be performed in minutes.

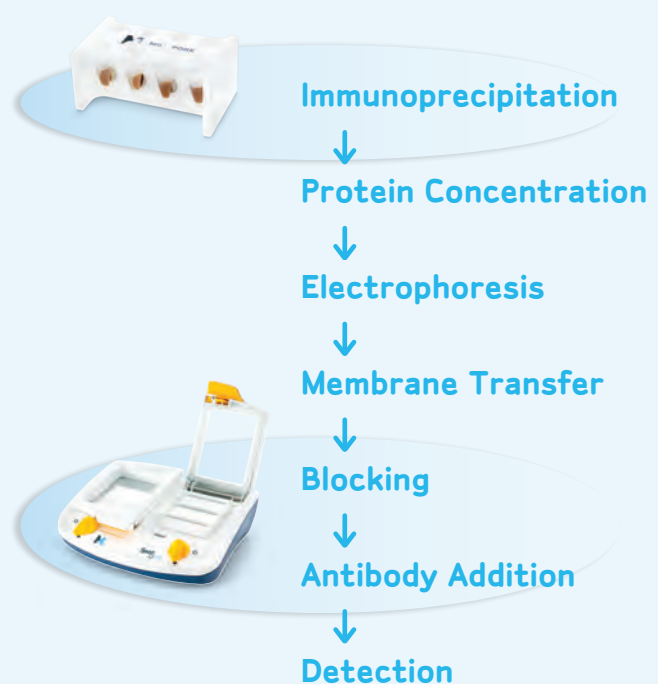
Immunoprecipitation reactions that may require up to 18 hours of incubation with beads using conventional methods can now be accomplished in as little as 10 minutes.

Dramatically reduce your sample preparation time with PureProteome magnetic beads.

RAPID DOWNSTREAM PROCESSING

To further speed up your immunodetection protocol, detect your immunoprecipitated proteins with the SNAP i.d. Protein Detection System. Unlike conventional western blotting, where diffusion is the primary means of reagent transport, this system applies a vacuum to actively drive reagents through the membrane.

Use PureProteome magnetic beads with the SNAP i.d. System to isolate and detect proteins in record time.



ORDERING INFORMATION

Description	Qty/Pk	Catalogue No.
PureProteome Magnetic Beads		
PureProteome Protein A Magnetic Beads	10 mL 2 x 1 mL	LSKMAGA10 LSKMAGA02
PureProteome Protein G Magnetic Beads	10 mL 2 x 1 mL	LSKMAGG10 LSKMAGG02
Pure Proteome Nickel Magnetic Beads	10 mL 2 x 1 mL	LSKMAGH10 LSKMAGH02
Magna GRIPTM Rack		20-400

Description	NMWL*	Qty/Pk	Catalogue no.
Protein Concentration (<4 mL samples)			
Amicon® Ultra-4 Centrifugal Filter Unit with Ultracel®-3 membrane	3	24	UFC800324
Amicon Ultra-4 Centrifugal Filter Unit with Ultracel-10 membrane	10	24	UFC801024
Amicon Ultra-4 Centrifugal Filter Unit with Ultracel-30 membrane	30	24	UFC803024
Amicon Ultra-4 Centrifugal Filter Unit with Ultracel-50 membrane	50	24	UFC805024
Amicon Ultra-4 Centrifugal Filter Unit with Ultracel-100 membrane	100	24	UFC810024

* Nominal Molecular Weight Limit or membrane cut-off in kDa

Description	Qty/Pk	Catalogue no.
Western Blotting		
SNAP i.d.™ Protein Detection System	1 kit	WBAVDATABASE
Includes hardware base, blot holder sample pack, blot roller, vacuum tubing user guide.		

Description	Size	Qty/Pk	Catalogue no.
Immobilon®-P Transfer membrane (0.45 µm)			
Cut Sheet	8 x 10 cm	10	IPVH08100
	10 x 10 cm	10	IPVH10100
	20 x 20 cm	10	IPVH20200
Roll	26.5 x 375 cm	1	IPVH00010

Immobilon-PSQ Transfer membrane (0.2 µm)			
Cut Sheet	8 x 10 cm	10	ISEQ08100
	10 x 10 cm	10	ISEQ10100
	20 x 20 cm	10	ISEQ20200
Roll	26.5 x 375 cm	1	ISEQ00010

Immobilon-FL Transfer membrane (0.45 µm)			
Cut Sheet	10 x 10 cm	10	IPFL10100
Roll	26.5 x 3.75 cm	1	IPFL00010

Blotting Sandwiches			
Immobilon-P	7 x 8.4 cm	20	IPSN07852
Blotting Sandwich	8.5 x 13 cm	20	IPSN08132

Description	Qty/Pk	Catalogue no.
Western Blot Detection Substrates		
Immobilon Western Chemiluminescent HRP Substrate	100 mL	WBKLS0100
Immobilon Western Chemiluminescent AP Substrate	100 mL	WBKDS0100
Spray & Glow™ ECL Western Blotting Detection System	100 mL	17-373

Алматы (7273)495-231
Ангарск (3955)60-70-56
Архангельск (8182)63-90-72
Астрахань (8512)99-46-04
Барнаул (3852)73-04-60
Белгород (4722)40-23-64
Благовещенск (4162)22-76-07
Брянск (4832)59-03-52
Владивосток (423)249-28-31
Владикавказ (8672)28-90-48
Владимир (4922)49-43-18
Волгоград (844)278-03-48
Вологда (8172)26-41-59
Воронеж (473)204-51-73
Екатеринбург (343)384-55-89

Иваново (4932)77-34-06
Ижевск (3412)26-03-58
Иркутск (395)279-98-46
Казань (843)206-01-48
Калининград (4012)72-03-81
Калуга (4842)92-23-67
Кемерово (3842)65-04-62
Киров (8332)68-02-04
Коломна (4966)23-41-49
Кострома (4942)77-07-48
Краснодар (861)203-40-90
Красноярск (391)204-63-61
Курск (4712)77-13-04
Курган (3522)50-90-47
Липецк (4742)52-20-81

Магнитогорск (3519)55-03-13
Москва (495)268-04-70
Мурманск (8152)59-64-93
Набережные Челны (8552)20-53-41
Нижний Новгород (831)429-08-12
Новокузнецк (3843)20-46-81
Ноябрьск (3496)41-32-12
Новосибирск (383)227-86-73
Омск (3812)21-46-40
Орел (4862)44-53-42
Оренбург (3532)37-68-04
Пенза (8412)22-31-16
Петрозаводск (8142)55-98-37
Псков (8112)59-10-37

Пермь (342)205-81-47
Ростов-на-Дону (863)308-18-15
Рязань (4912)46-61-64
Самара (846)206-03-16
Саранск (8342)22-96-24
Санкт-Петербург (812)309-46-40
Саратов (845)249-38-78
Севастополь (8692)22-31-93
Симферополь (3652)67-13-56
Смоленск (4812)29-41-54
Сочи (862)225-72-31
Ставрополь (8652)20-65-13
Сургут (3462)77-98-35
Сыктывкар (8212)25-95-17
Тамбов (4752)50-40-97

Тверь (4822)63-31-35
Тольятти (8482)63-91-07
Томск (3822)98-41-53
Тула (4872)33-79-87
Тюмень (3452)66-21-18
Ульяновск (8422)24-23-59
Улан-Удэ (3012)59-97-51
Уфа (347)229-48-12
Хабаровск (4212)92-98-04
Чебоксары (8352)28-53-07
Челябинск (351)202-03-61
Череповец (8202)49-02-64
Чита (3022)38-34-83
Якутск (4112)23-90-97
Ярославль (4852)69-52-93

Россия +7(495)268-04-70

Казахстан +7(7172)727-132

Киргизия +996(312)96-26-47

<https://millipore.nt-rt.ru> || <mailto:mer@nt-rt.ru>